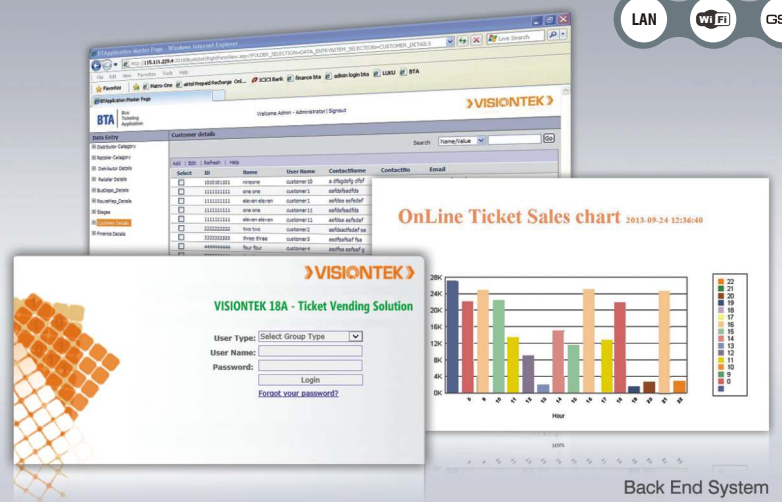


Ticket Vending Solution - 18A



Smart Ticketing Terminal
With contactless reader (RFID/NFC)



Overview

Ticket Vending Solution (TVS) is an innovative end to end Web-based solution that offers simplified options to cut down the inventory management of pre-printed traditional ticket sales and save the passenger time & hassles.

It also helps the Management plug revenue leakages. The system aims to bring transparency in the process from a User perspective as well as the Fleet Operator's.

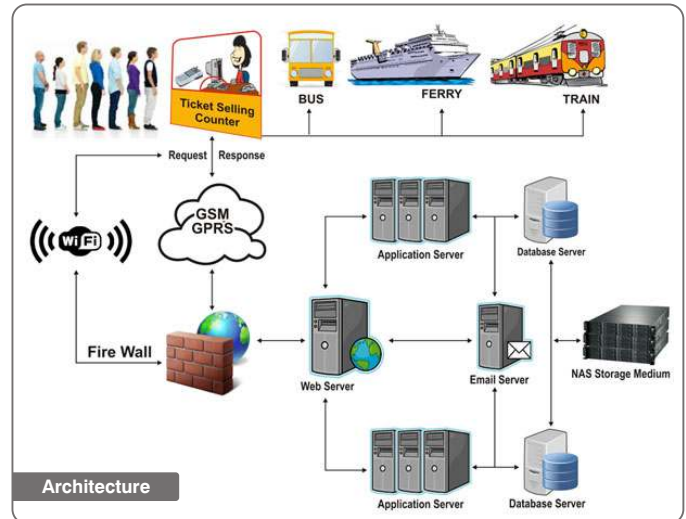
Public transport in developing economies plays a critical role. An efficient and cost effective system increases productivity and connectivity. In the twenty-first century, time is more precious than ever, and people demand products and services they can pay for quickly and efficiently.

Benefits

- Complete online and/or Offline ticket sales
- Save time and maintain control of the entire ticketing process
- Faster and easier reconciliation
- Accept prepaid contactless card (RFID / NFC) which can deduct the amount for every transaction
 - ✓ Prepaid contactless card (RFID / NFC) program for ticket payment
 - ✓ Seasonal pass configured contactless cards (RFID / NFC) for students, senior citizens, etc
 - ✓ Ticket Validation and on-board contactless payment
- Low cost per transaction and Increase ticket sales
- Card management feature
- Introduce new price ticket denominations anytime
- Reduce pre-printed tickets cost, warehouse cost and associated costs
- Eliminate loss and theft of pre-printed tickets
- Easy journey with prepaid cards / seasonal cards to avoid the money change (coins) problem / no search for small cash to return to passenger

Features

- Simpler, Easier, Faster
- Safe and Secure and scalable solution
- Contactless card (DESFIRE EV1 card and NFC) payment for Ticket sale with high security of the payment transaction
- Card activation and Top-Up features
- Card de-activation in case of loss of card or damaged card
- Contactless Card personalization as per the customer requirement
- Customizable receipt print format
- Contactless Card management feature
- Centralized management and security in a single system
- Event Ticketing Application (Customized tickets based upon events like movie, amusement park, sporting event and many entertainment venues)
- Reduces the opportunities for misuse
- Speedy process to issue tickets
- Fully portable and lightweight, ideal for Conductors
- Entry tickets tracked through barcode system (Ticket with encrypted barcode print to avoid fraud)
- System is designed to allow the authorised ticket passenger through access gates / turnstile by reading the secure barcode ticket / Contactless card
- User defined group creation: Administrator, Distributor, Finance team, Customer care team, POS user (conductors) and Transport Company



- POS terminal management
- Can create a bus / Train / Ferry depot details in system as Transport system
- Can create a Route map / stages name
- Can create a denominations (ticket value) between stages
- Dynamically updates terminal software
- Mode of Communications: GSM/GPRS or Wi-Fi or Ethernet
- Vast number of graphical Reports for strategic planning
- Instructive Help index
- Simple to use with short learning curve

Server Side Specifications

Operating System	Microsoft Windows 2008 Server standard edition with SP2
Database	Microsoft SQL 2008 standard edition
Processor	Intel xeon (Quad core) 2.0 GHZ & 12MB cache & 1333 MHz FSB
Ram	Minimum 4GB
Hard disk drives	300GB x 3 (swap SAS drives)
Power Supply	Dual redundant, hot swappable
Tape Drive	For backup purposes
Firewall	Firewall Security has to be given to the Server
Redundancy	Dual-redundant servers - Hot take-over functionality
Webserver	IIS
Web Browser	Microsoft Internet Explorer V 6.0
Framework	Dot Net 2.0 / 4.0
Office	Microsoft Office 2010
Others	Antivirus and Adobe Acrobat

Note : Flexible Software and hardware can be configured based on the Ticket traffic / Solution Architecture

We pursue a policy of continuous research and product development. Specifications and features are subject to change without notice.

