

Single-Phase Static Energy Meter 36SM



Overview

VISIONTEK 36SM single phase static electronic energy meter is designed to meter residential and small commercial energy consumers in distribution networks.

The meter is designed to offer reliable energy measurement in single phase circuit and is highly suitable for metering and remote communication purposes. It comes with liquid crystal display (LCD) and with a range of communication options for local and remote monitoring.

The meter complies with national and international metering standards.

It is a perfect combination of well-proven metering technology and state of the art communication modems all integrated in single enclosure.

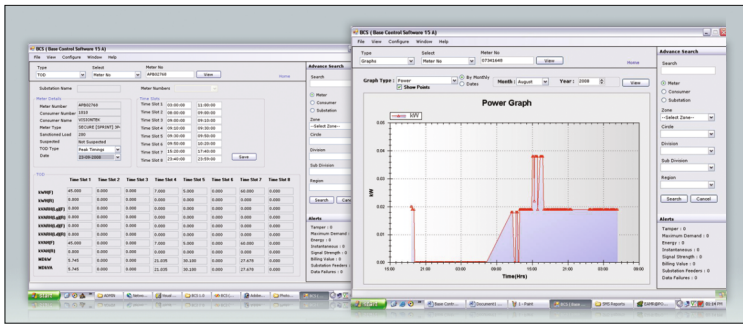
The intelligent features of detecting and recording different anomaly conditions and cover opening events make it ideal choice for revenue protection for distribution companies

Event Logging	TOD Metering	Load Profiling	Remote Metering
---------------	--------------	----------------	-----------------

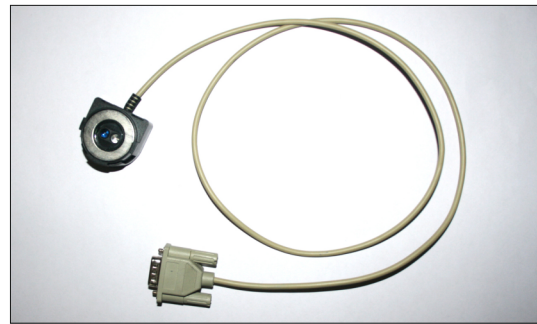
Features

- Class 1.0 accuracy and compliance with IS/IEC standards
- LCD for display of measured parameters with legends and for tamper indications
- Programmable Time of Use metering
- Programmable load profile for 15 minutes or 30 minutes or 60 minutes interval for kWh, kW MD, voltage, current
- Event logging of tamper and cover open detection
- Bill point registers storage up to last 12 months
- LED indications for Calibration and Meter status
- Optical/IR*/IrDA*/ Communication for meter reading
- RS232 port*, Inbuilt LPRF module*, Inbuilt BLE module* for Remote Meter Reading
- Meter reading in absence of mains with built-in battery
- High immunity to magnetic influence and electrostatic discharge
- Sealing provisions for meter cover & base and terminal cover

Supporting Utilities



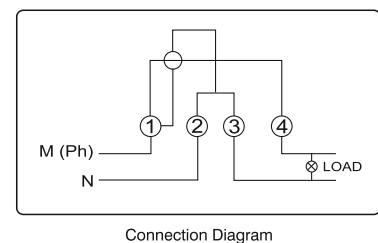
Meter Reading Software 16MS



Meter Reading Cable

Specifications

Connection Type	Single Phase Two Wire
Accuracy	Class 1.0 as per IS13779, IEC 62052-11/IEC 62053-21,CBIP 325
Voltage	Nominal : 240 V (L-N) Operating : -40% to +20%
Current	5-30A, 10-60A*
Power Factor Range	Zero Lag – Unity – Zero Lead
Frequency	50 Hz \pm 5%
Starting Current	0.2% of Ib at Vref & Unity Power Factor Power Consumption
Power Consumption	Voltage Circuit:1.5W/8.0VA & Current Circuit:4.0VA
Display	LCD with back-light, 7 segment display for parameters and icons for tamper indications load switch status and data communication
Communication Interfaces	Optical port hardware compatible to IEC 62056-21 *IR/IrDA *Rs232 port *Inbuilt LPRF module *BLE Communication
Measured Values/Units	Active Energy *Apparent Energy Maximum Demand kW *Maximum Demand kVA Instantaneous Voltage Instantaneous Current Instantaneous Frequency Instantaneous Power Factor
Maximum Demand (MD) Register	Programmable Integration Period (15 or 30 or 60 minutes) ; Sliding window method or Fixed window method
Billing registers	Upto 12 months bill point registers
Time of Use / Time of Day	Programmable time zones
Tariff registers	Programmable tariff registers
Event (Tampers) Logging	Neutral Missing (Single Wire) Current Reversal Earth load (Current bypass, Current unbalance) Power ON / OFF Magnetic influence Top Cover Open *Over Load *Neutral Disturbance *High Voltage *Low Voltage
Temperature Range	-10° C to 60° C
Humidity	</=95%
Enclosure	IP 51
Dimensions (L x W x H) in mm	204 x 139 x 83 mm +/- 2mm (Vary with terminal cover length)
Weight	0.6kg +/- 0.1kg



Note: We pursue a policy of continuous research and product development. Specifications and features are subject to change without notice *Indicates optional feature or customization as per requirement



Linkwell Telesystems Pvt. Ltd. 1-11-252/1B, Behind Shoppers Stop, Begumpet, Hyderabad 500 016, Telangana, INDIA
Telephone: +91 40 66388000 e-mail: info@visiontek.co.in www.visiontek.co.in

BR-12022025-36SM-Rev.1.1

Disclaimer: VISIONTEK® is a registered trademark owned by Linkwell Telesystems Pvt. Ltd.