

## Three Phase CT Operated Meter 37CM



### Overview

VISIONTEK 37CM Three Phase Electronic Energy Meter is a CT operated trivector meter designed to meet the energy metering requirements of high power consumers.

37CM is suitable to deploy for industrial consumer (LT) revenue metering and distribution transformer metering for audit purposes. Meter complies with IS and IEC Class 0.5S metering standards, CBIP TR 88/304 and communication protocol in accordance with BIS ICS ETD 13 doc 6211 (IS 15959) Category A (DT Energy Audit metering) and Category C (LT Consumer metering) for communication interoperability.

Event Logging

TOD Metering

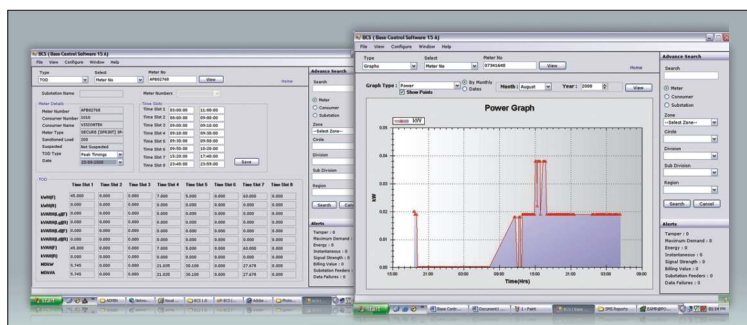
Load Profiling

Remote Meter Reading

### Features

- Class 0.5S accuracy compliance with IS/IEC standards
- LCD for display of measured parameters & for anomaly conditions
- LED indications for calibration of active energy & reactive energy
- Billing point registers storage up to last 12 months
- Programmable TOU / TOD
- Event logging of tamper and cover open detection
- Ultrasonic welding option
- Programmable load profile data for 15 or 30 or 60 minutes interval for kWh, kVarh, kVAh, Voltages, Currents
- Optical communication port for local meter reading
- RS 232 port\* for Remote Meter reading
- Meter reading in absence of mains with built-in battery
- High immunity to magnetic influence and electrostatic discharge
- Sealing provision for meter cover & base and terminal cover
- Interoperability through open communication protocol

# Supporting Utilities



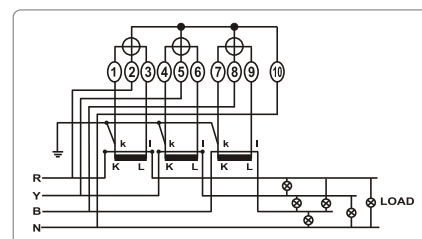
Meter Reading Software 36MS



Meter Reading Cable

## Specifications

Connection Type	Three Phase Four Wire
Accuracy	0.5S as per IS-14697, IEC 62052-11, IEC 62053-22, IEC 62053-23, CBIP 325
Voltage	3 x 240V (L - N) Operating : -40 % to +20 %
Current	-/5A, Ib : 5A and Imax : 10A (Programmable CT Primary value)
Power Factor Range	Zero lag – Unity – Zero lead
Frequency	50 Hz $\pm$ 5%
Starting Current	0.1% of Ib at Vref, Unity Power Factor
Power Consumption	Voltage Circuit: 1.5W/8.0VA   Current Circuit: 4.0VA
Display	LCD with backlit, 8 digit 7 segment display for parameters & icons for anomaly conditions
Real Time Clock	$\pm$ 3 min per year
Communication Interfaces	Optical port Hardware compatible to IEC 62056-21 *RS232 port (RJ11) *Communication protocol as per IS 15959 Part-1 Category C1
Data Storage	Non-volatile memory with a retention time of minimum 10years
Measured Values / Units	Active energy Reactive energy, Apparent Energy Maximum Demand kW / Rising Demand Maximum Demand kVA / Rising Demand Instantaneous Phase wise Voltages Instantaneous Phase wise Currents Instantaneous Frequency Instantaneous Power Factor
Maximum Demand (MD) Register	Integration period for 15 minutes or 30 minutes Sliding window or Fixed window method
Billing registers	Up to last 12 months bill point registers
Time of Use / Time of Day	Programmable time zones
Tariff registers	Programmable tariff register
Events Logging	Missing Potential; Potential Unbalance*; High Potential*; Low Potential*; Current Reversal ; Current Circuit High*; Current Circuit Low*; Current Unbalance*; Current Circuit open; Current Circuit short (bypass) ; Neutral Disturbance ; Power ON / OFF ; Top Cover Open Detection ; Magnetic Influence ; Low Power Factor*; Over Load*
Temperature Range	-10° to 60° C
Humidity	$\leq$ 95%
Enclosure	IP 51
Dimensions (L x W x H) in mm	232 x 192 x 96 mm +/- 2 mm (Varies with terminal cover length)
Weight	1.34 kg +/- 0.1 kg



Meter Connection Diagram

Note: We pursue a policy of continuous research and product development. Specifications and features are subject to change without notice

\*Indicates optional feature



Linkwell Telesystems Pvt. Ltd. 1-11-252/1B, Behind Shoppers Stop, Begumpet, Hyderabad 500 016, Telangana, INDIA  
Telephone: +91 40 66388000 e-mail: [info@visiontek.co.in](mailto:info@visiontek.co.in) [www.visiontek.co.in](http://www.visiontek.co.in)